

LOGLIFT 61Z

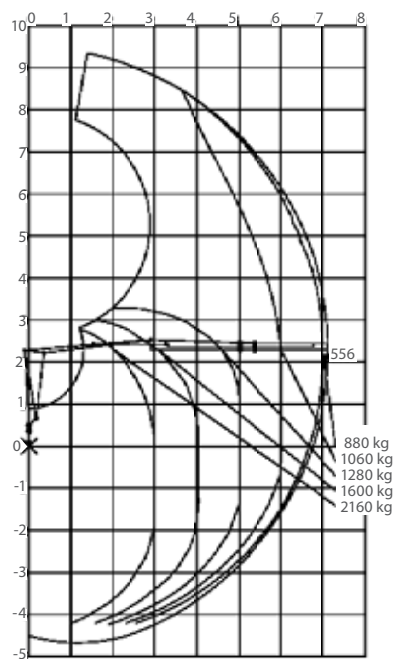


LOGLIFT 61Z BASIC DATA

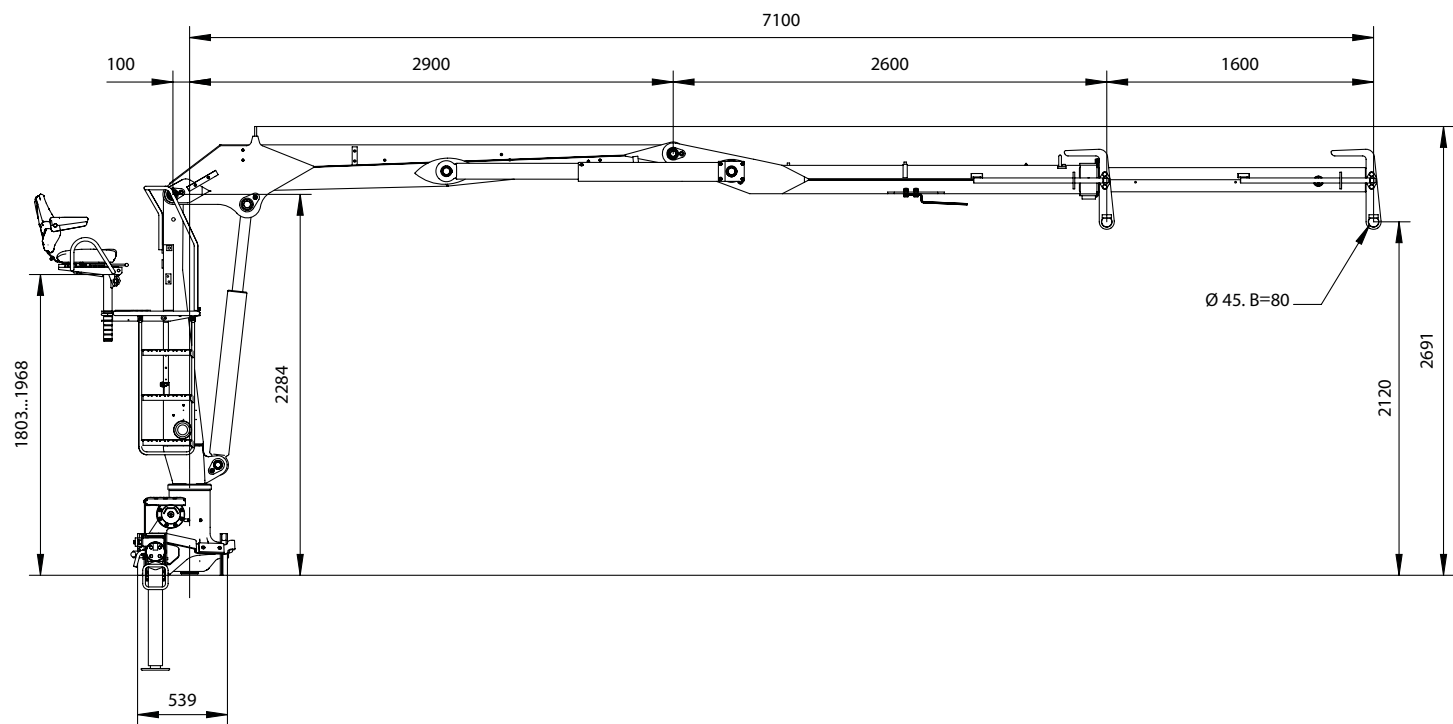
Technical data	F61Z
Max. lifting capacity (kNm)	64
Hydraulic outreach* (m)	7.10
Hydraulic boom extension* (m)	1.60
Outreach / lifting capacity. standard (m/kg)	3.0 - 1640 4.0 - 1380 5.0 - 1220 6.0 - 1060 7.0 - 880
Slewing system	Single
Slewing angle (°)	415
Slewing torque, gross (kNm)	13.1
Max. slope viable at full capacity (°)	8
Max. working pressure (MPa)	22
Recommended oil flow – fixed pump (l/min), 1-pump	60
Recommended oil flow – fixed pump (l/min), 2-pump	2 × 50-60
Min. recommended oil flow – variable displacement pump (l/min)	-
Power needed at rec. oil flow (kW) - fixed pump, 1-pump	24
Power needed at rec. oil flow (kW) - fixed pump, 2-pump	49
Power needed at rec. oil flow (kW) - variable displacement pump	-
Road width (mm)	2240
Weight - Top seat crane with standard stabilizer equipment (kg) ¹⁾	1360

¹⁾ Weight with fixed pump system, oil weight included

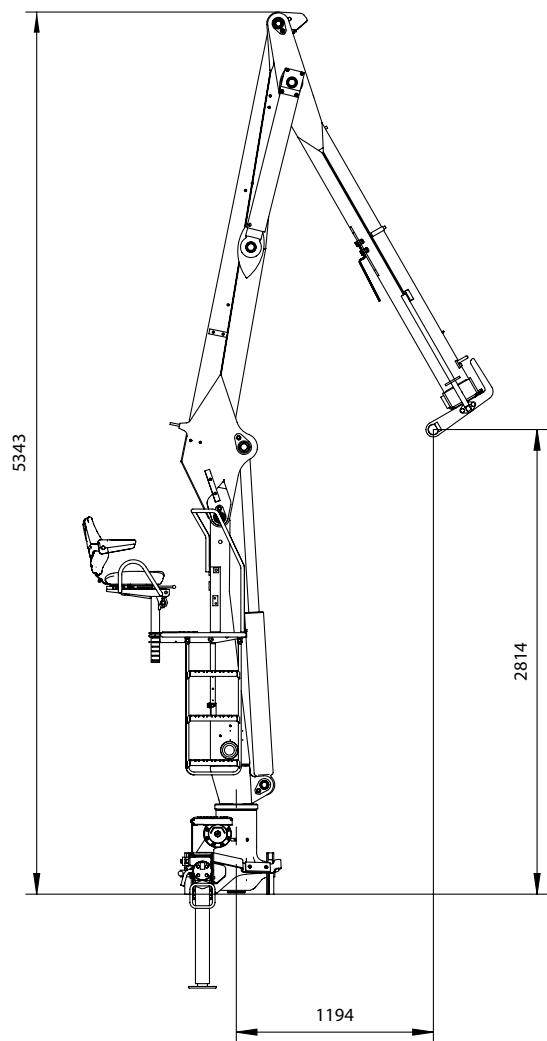
Load diagram F61Z



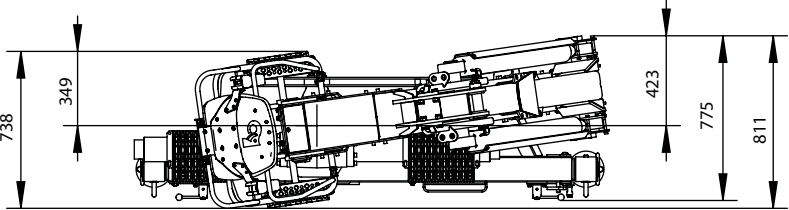
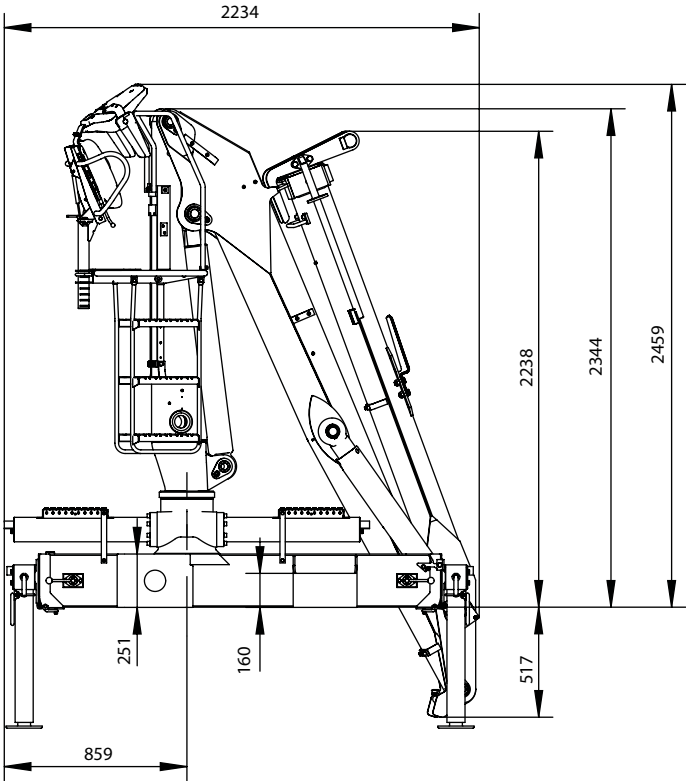
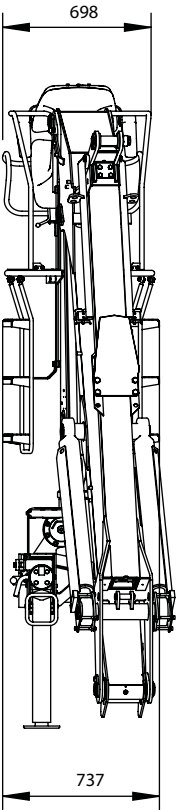
Side view F61Z



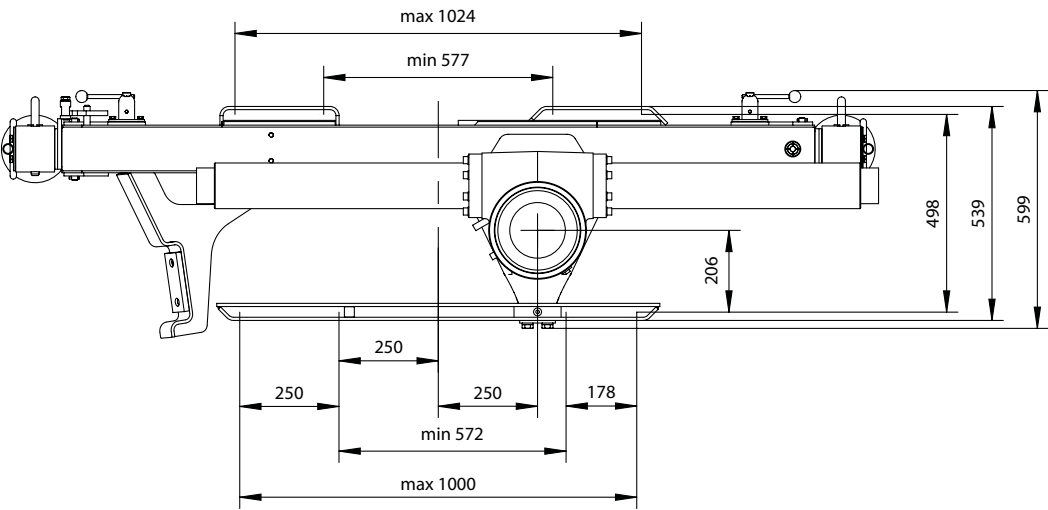
Close in



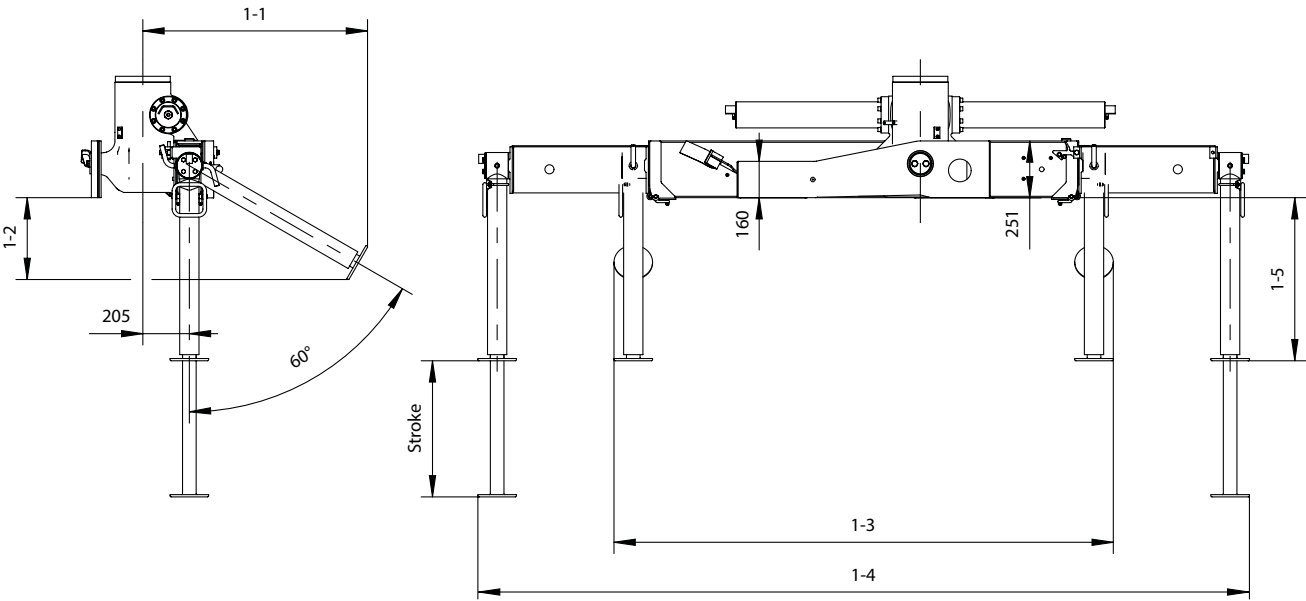
LOGLIFT 61Z Folded



Base with stabilizers

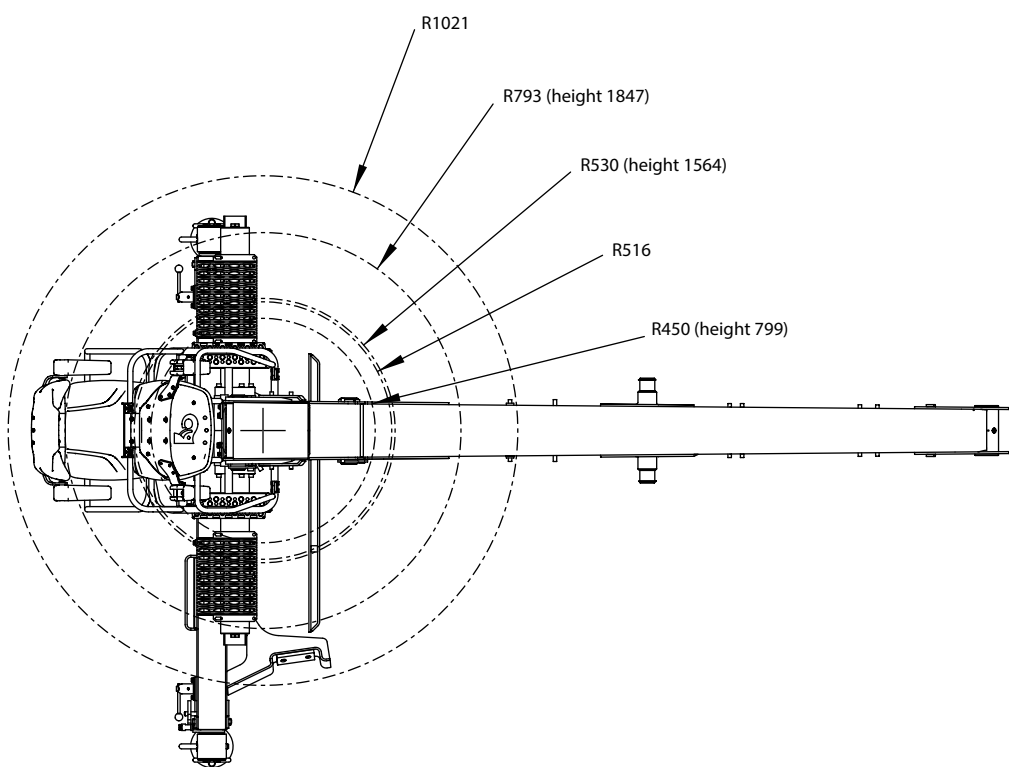
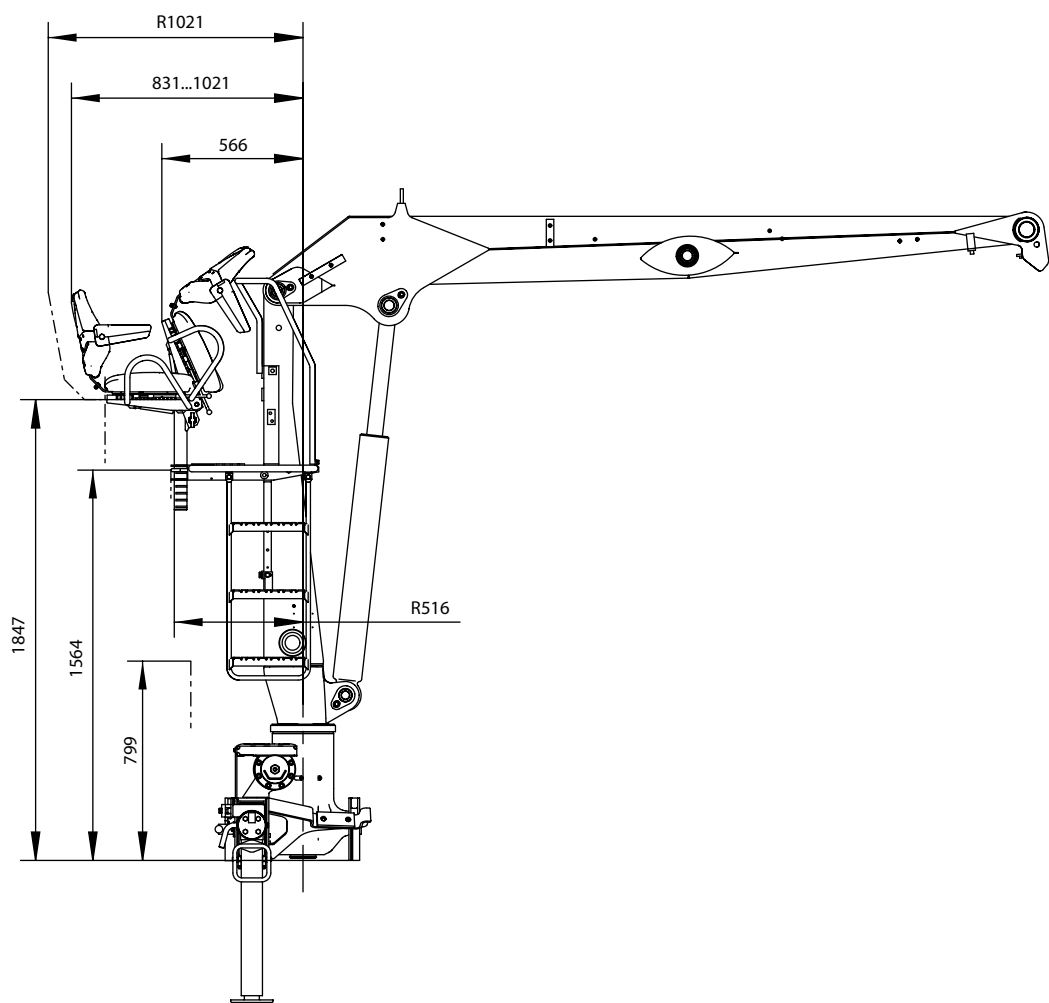


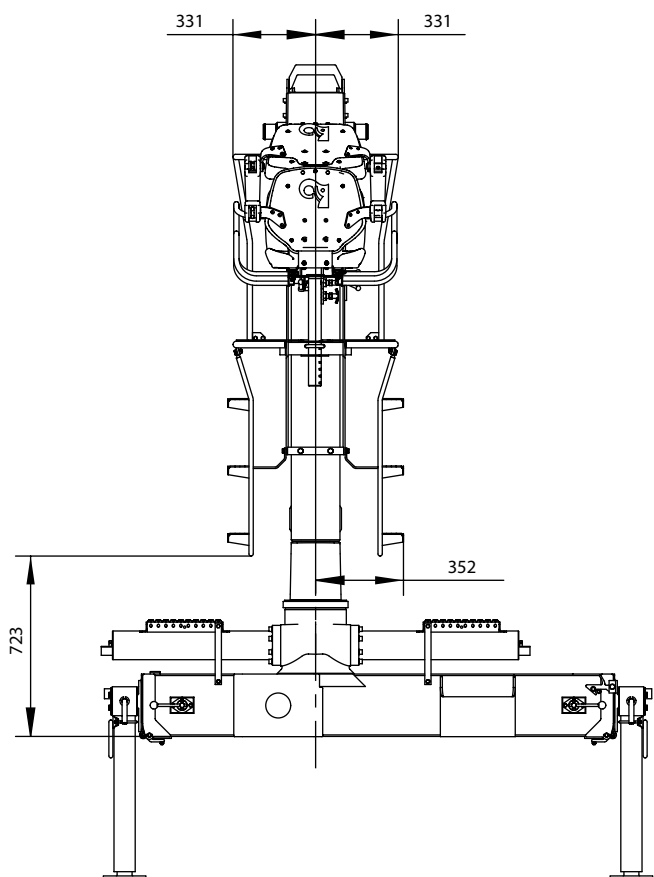
Stabilizers



		Stroke	1-1	1-2	1-3	1-4	1-5
STD	D	450	860	286	2200	3400	569
	E	600	991	361	2200	3400	719

Top seat





BUILT TO PERFORM

Hiab is the world's leading provider of on-road load handling equipment. Customer satisfaction is the first priority for us. Hiab's product range includes HIAB loader cranes, JONSERED recycling and forestry cranes, LOGLIFT forestry cranes, MOFFETT truck mounted forklifts and MULTILIFT demountables, as well as DEL, WALTCO and ZEPRO tail lifts.

hiab.com

Hiab is part of Cargotec.

cargotec.com

Disclaimer. We reserve the right to make changes. Illustrations, drawings and data are not always in accordance with the latest version or standard model in production. The models in the pictures may present special equipment or colours.

© TD-F61Z-EN-WW_160630

