

NEW LOGLIFT 125Z

STRONGEST IN CLASS





STRONGEST IN CLASS



Get ready to lift more than you thought possible. The new LOGLIFT 125Z opens new possibilities for increased payload with the highest lifting capacity in class and optimum lift/weight ratio.

With its robust design and innovative technical features — like the SmartBase™, new-generation Hi-Cab™, and nDurance™ nano-technology painting process — the new LOGLIFT 125Z upholds everything you have come to expect from the market's most durable line of forestry cranes.

Here are just a few of the advancements you gain:

- Highest lifting capacity in class
- SmartBase™ for smooth handling, stability and low weight
- New-generation Hi-Cab™ cabin, enhanced in 125 dimensions
- nDurance nano-technology paint process for all-weather protection
- HPL™ (Hose Protection Link) to guard against blows and sticking

STRENGTHENING YOUR PERFORMANCE

The new LOGLIFT 125Z is designed to lift more while withstanding the daily demands of unforgiving environments. And do it over and over again for years of reliable service with the lowest lifetime cost. Experience the difference in performance when innovation meets durability.

Highest lifting capacity in class

The more timber you can move, the more money you can make. With a lifting capacity unmatched in its class, the new LOGLIFT 125Z gives you maximal payload per trip to keep you ahead.

- High lift/weight ratio for higher payload
- Lightest total installation weight



Folding within the truck dimensions

Cranes in the HIAB Z-series fold up into the minimum possible amount of space. Moreover, they are licensed to meet new European regulations as they should be – with the grapple on.



*Bolted stabiliser
turning devices*

Three-point bridge

SmartBase™



New-generation Hi-Cab™ cabin, enhanced in 125 dimensions

Safety, comfort, visibility. From top to bottom, every bit of the new-generation Hi-Cab™ cabin is held up to these standards with uncompromising care. Enhanced in 125 dimensions, Hi-Cab™ is built to perform with immediate benefits and over the long haul.

- Hi-Vis™ — industry's highest visibility factor
- Protected under-cabin AC
- High-quality, low-maintenance stainless steel
- OPS-approved shock-proof front door
- Ergonomic, generously proportioned seat
- Outside valve position for easy service



HPL™ (Hose Protection Link)

nDurance

Improved boom system

Hi-Vis™ factor 5



Professional colour coordination

Match your crane to virtually any colour of the rainbow — from your unique company colours to your own favorite hue.



HIAB BLACK



HIAB RED



FOREST GREEN



RAL COLOURS

HPL™ (Hose Protection Link) to guard against blows and sticking

Protecting hoses on any crane is important, but especially in the harsh environment of log handling. HPL gives extra protection — from crane tip to rotator — against accidental impacts. The system includes the rotator and hanger to provide a complete and integrated solution.

- Robust link with a 40 mm upper pin
- Generous bearing dimensions for minimum wear
- Cleverly designed plug-in fittings
- Easy access for tightening, service and maintenance
- Quick-change hoses



SmartBase™ for smooth handling, stability and low weight

Gain a confident driving experience for operators with the new SmartBase™. Fitting bolts help spread the forces from the crane through the three-point bridge to the sub-frame and minimise interference with chassis mobility, so driving the truck remains a smooth and comfortable experience.

- Bolt-on stabiliser lifter
- Adjustable side bearings
- Lighter weight with no need to reinforce sub-frame



nDurance nano-technology paint process for all-weather protection

Rain, dust, sand and sunlight are unforgiving forces that wear on a crane all year around. This is why we have created nDurance — a technologically advanced and environmentally sound pre-treatment and paint process, based on nano-technology combined with state-of-the-art e-coating and powder painting.

- Nano-technology covers every square millimeter
- Three different protective layers for highest corrosion resistance
- 100% phosphate free
- No heavy metals and virtually zero waste

nDurance™

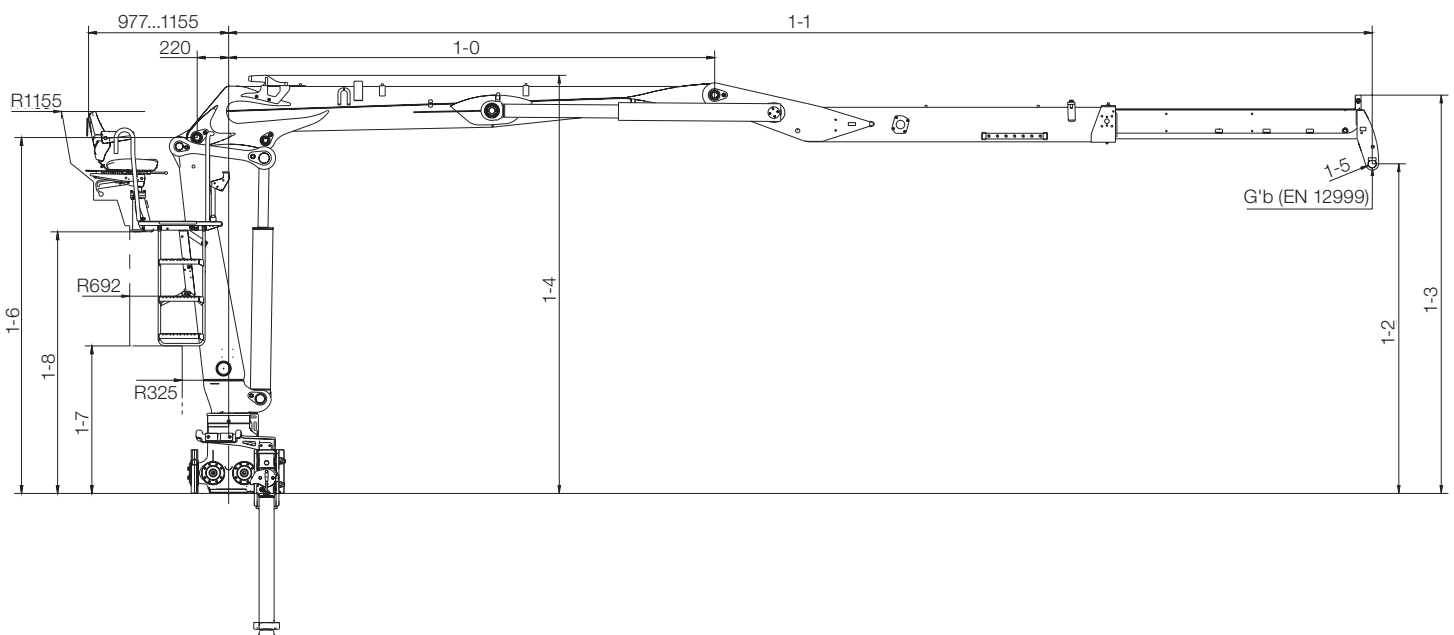
125Z FORESTRY CRANE

Technical data	125Z 78	125Z 80	125Z 89	125Z 93
Max. lifting capacity (kNm)	112	111	107	104
Hydraulic outreach (m)	7.8	8.0	8.9	9.3
Hydraulic boom extension (m)	1.67	1.67	2.8	2.8
Outreach – lifting capacity, standard (m – kg)	3.0 - 3350 4.0 - 2650 5.0 - 2220 6.0 - 1900 7.0 - 1620 7.5 - 1440	3.0 - 3350 4.0 - 2600 5.0 - 2180 6.0 - 1880 7.0 - 1600 7.7 - 1440	3.0 - 3250 4.0 - 2550 5.0 - 2100 6.0 - 1800 7.0 - 1540 8.0 - 1320 8.6 - 1060	3.0 - 3150 4.0 - 2460 5.0 - 2040 6.0 - 1760 7.0 - 1500 8.0 - 1300 9.0 - 970
Slewing system	Double	Double	Double	Double
Slewing angle (°)	425	425	425	425
Slewing torque, gross (kNm)	29	29	29	29
Max. slope viable at full capacity (°)	8	8	8	8
Max. working pressure (MPa)	25	25	25	25
Recommended oil flow – fixed pump (l/min), 1-pump	70-90	70-90	70-90	70-90
Recommended oil flow – fixed pump (l/min), 2-pump	2 x 60-80	2 x 60-80	2 x 60-80	2 x 60-80
Min. recommended oil flow – variable displacement pump (l/min)	175	175	175	175
Power needed at rec. oil flow (kW) - fixed pump, 1-pump	32	32	32	32
Power needed at rec. oil flow (kW) - fixed pump, 2-pump	74	74	74	74
Weight with standard base* m (kg)	2140	2175	2284	2311
Weight with standard base and cabin* m (kg)	2540	2575	2684	2711
Height from bottom to upper joint in column (mm)	2468	2508	2468	2508

* Functional weight including oil in slewing system and hydraulics, without hanger, rotator, and grapple.

This table shows a few examples of models, and represents some of all options available. With the opportunity to configure your crane, we can provide you with a crane perfectly tailored to your needs. Please contact your local dealer for more information on the variety of options we can offer.

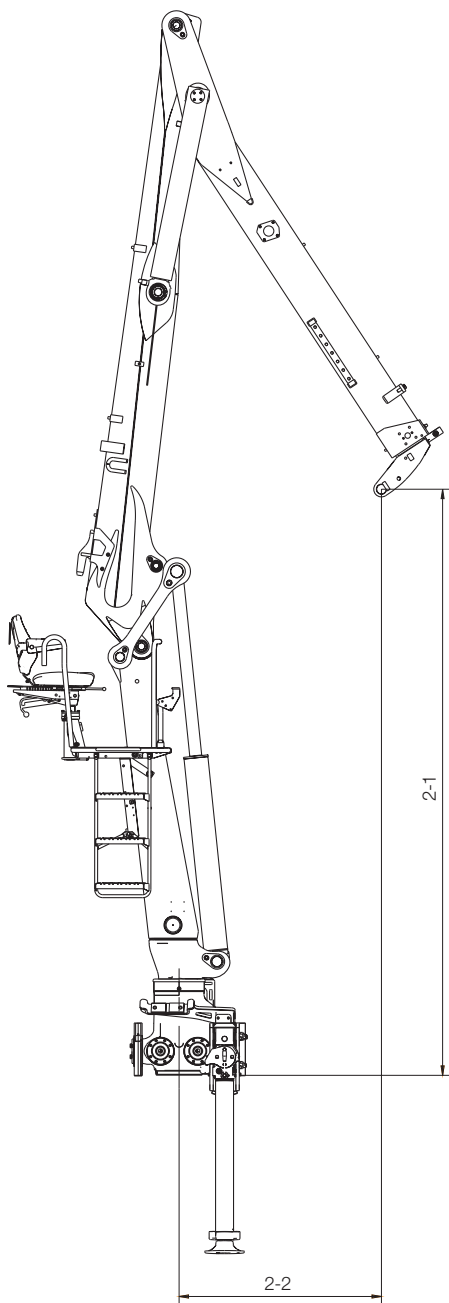
Side view with top seat



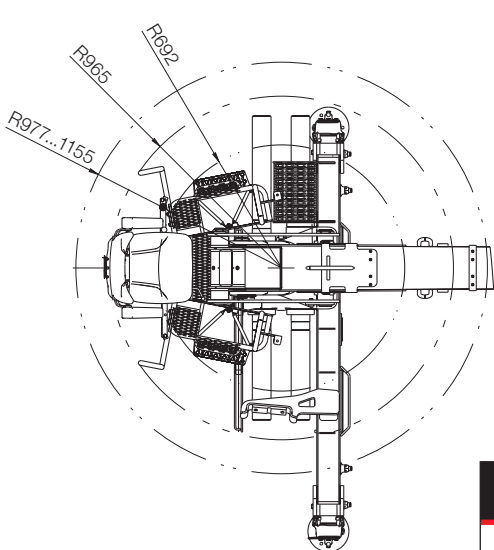
Model	1-0	1-1 min	1-1 max	1-2	1-3	1-4	1-5	1-6	1-7	1-8	G'b (kg)
78	3180	6110	7780	2285	2770	2910	Ø 40, B=186	2468	1000	1800	290
80	3400	6330	8000	2325	2810	2950	Ø 40, B=186	2508	1040	1840	300
89	3180	6080	8880	2210	2750	2910	Ø 40, B=186	2468	1000	1800	330
93	3400	6450	9250	2250	2790	2950	Ø 40, B=186	2508	1040	1840	350

All measurements in mm

Upright view with top seat



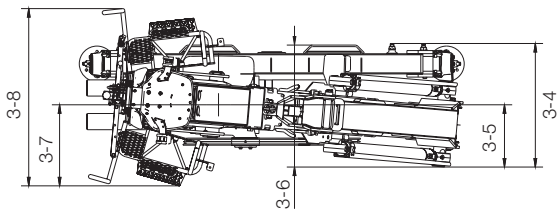
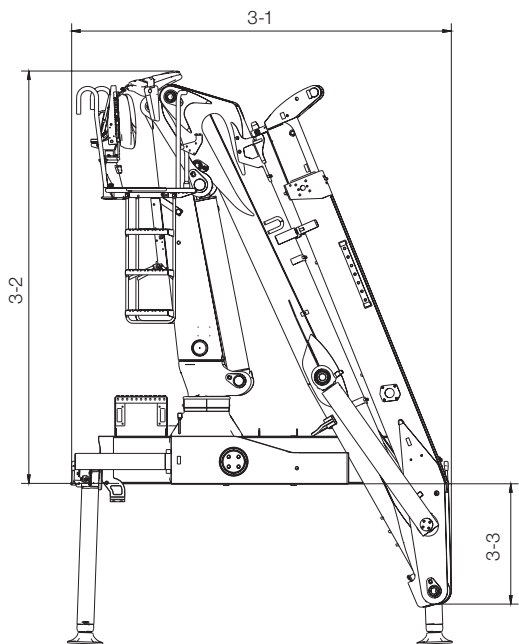
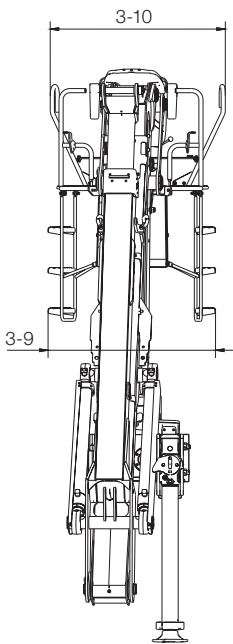
Top view with top seat



Model	2-1	2-2
78	3165	1150
80	3425	1180
89	3145	1080
93	3280	1190

All measurements in mm

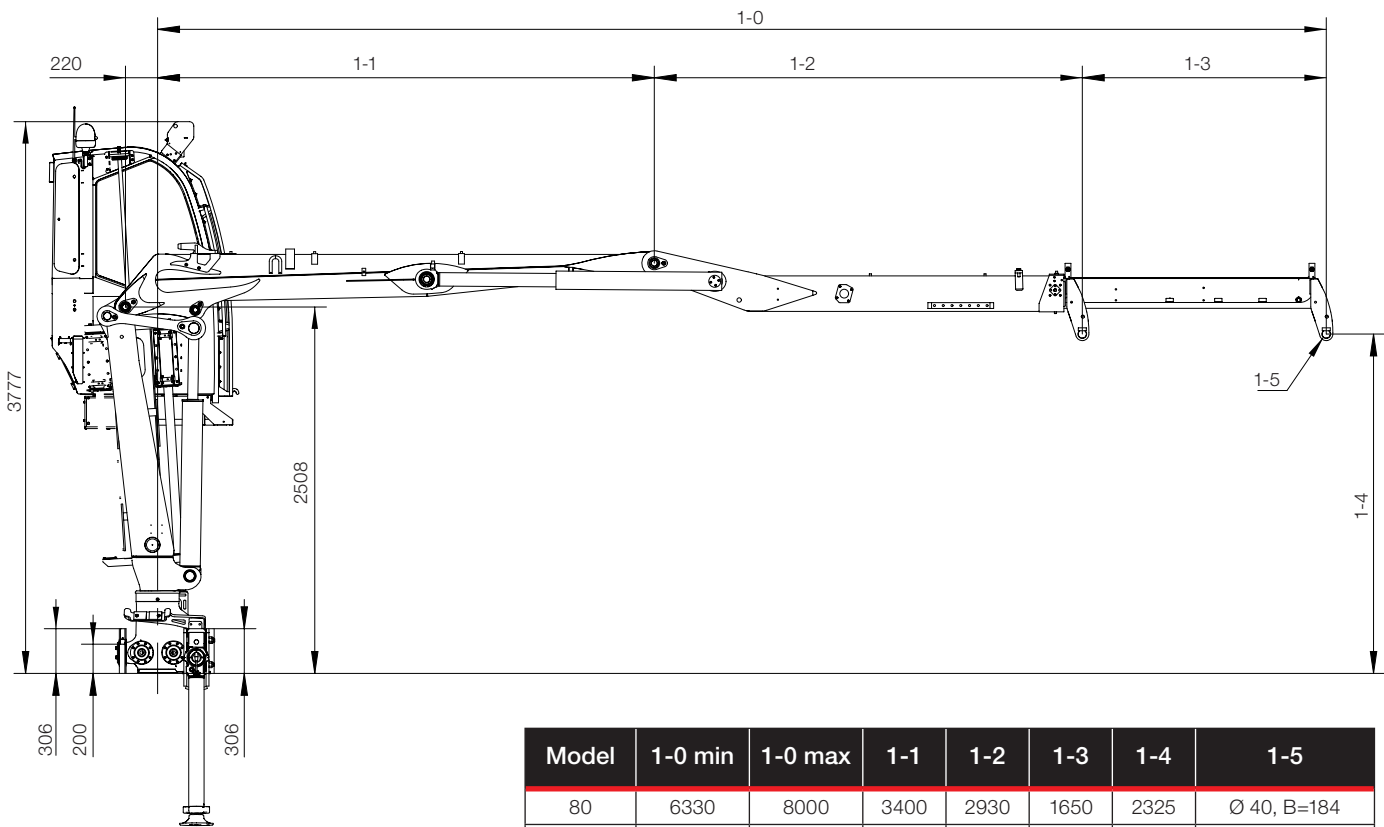
Folded view with top seat



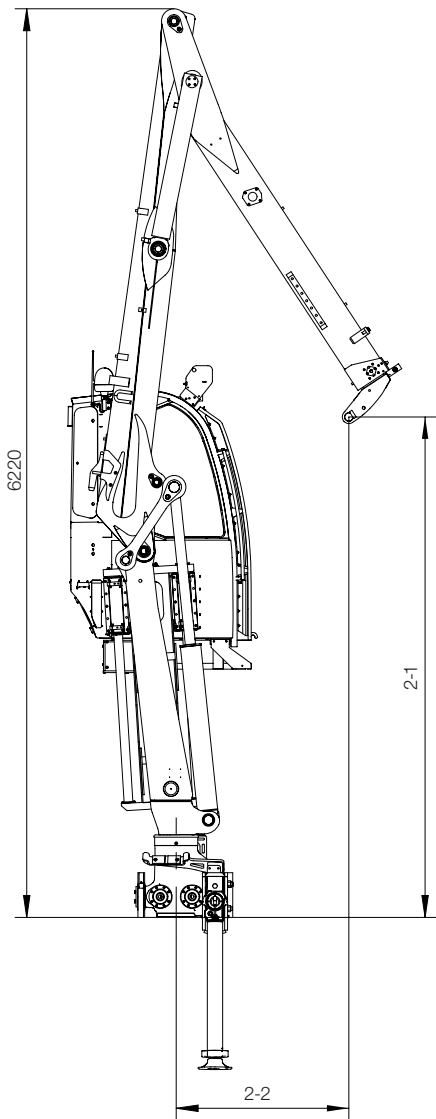
Model	3-1	3-2	3-3	3-4	3-5	3-6	3-7	3-8	3-9	3-10
78	2440	2635	630	790	400	785	530	1150	1090	1135
80	2465	2675	800	800	405	790	530	1150	1090	1135
89	2440	2635	630	790	400	785	530	1150	1090	1135
93	2465	2675	800	800	405	790	530	1150	1090	1135

All measurements in mm

Side view with cabin

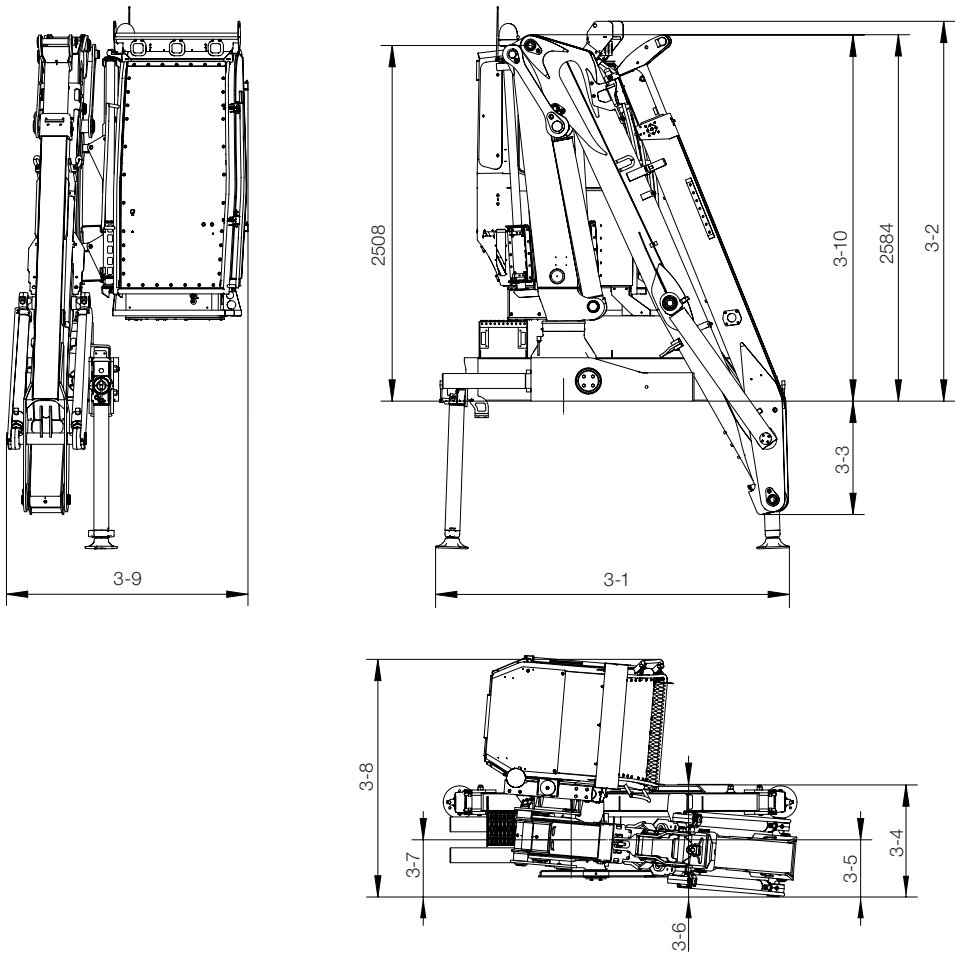


All measurements in mm



All measurements in mm

Folded view
with cabin

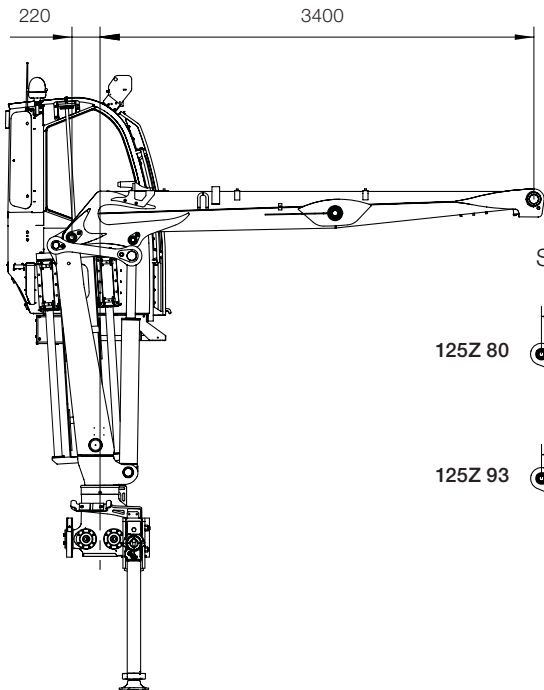


Model	3-1	3-2	3-3	3-4	3-5	3-6	3-7	3-8	3-9	3-10
80	2498	2679	800	800	405	790	405	1680	1705	2582
93	2498	2679	800	800	405	790	405	1680	1705	2569

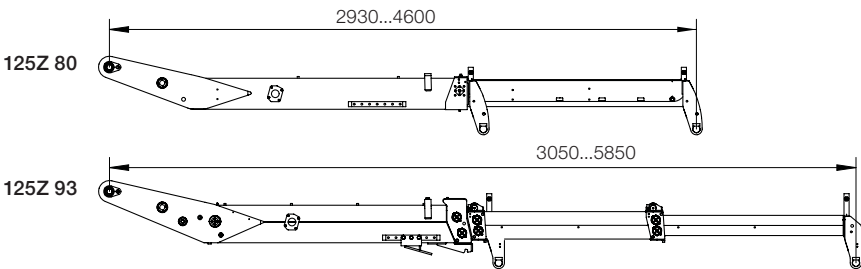
All measurements in mm

Available boom combinations

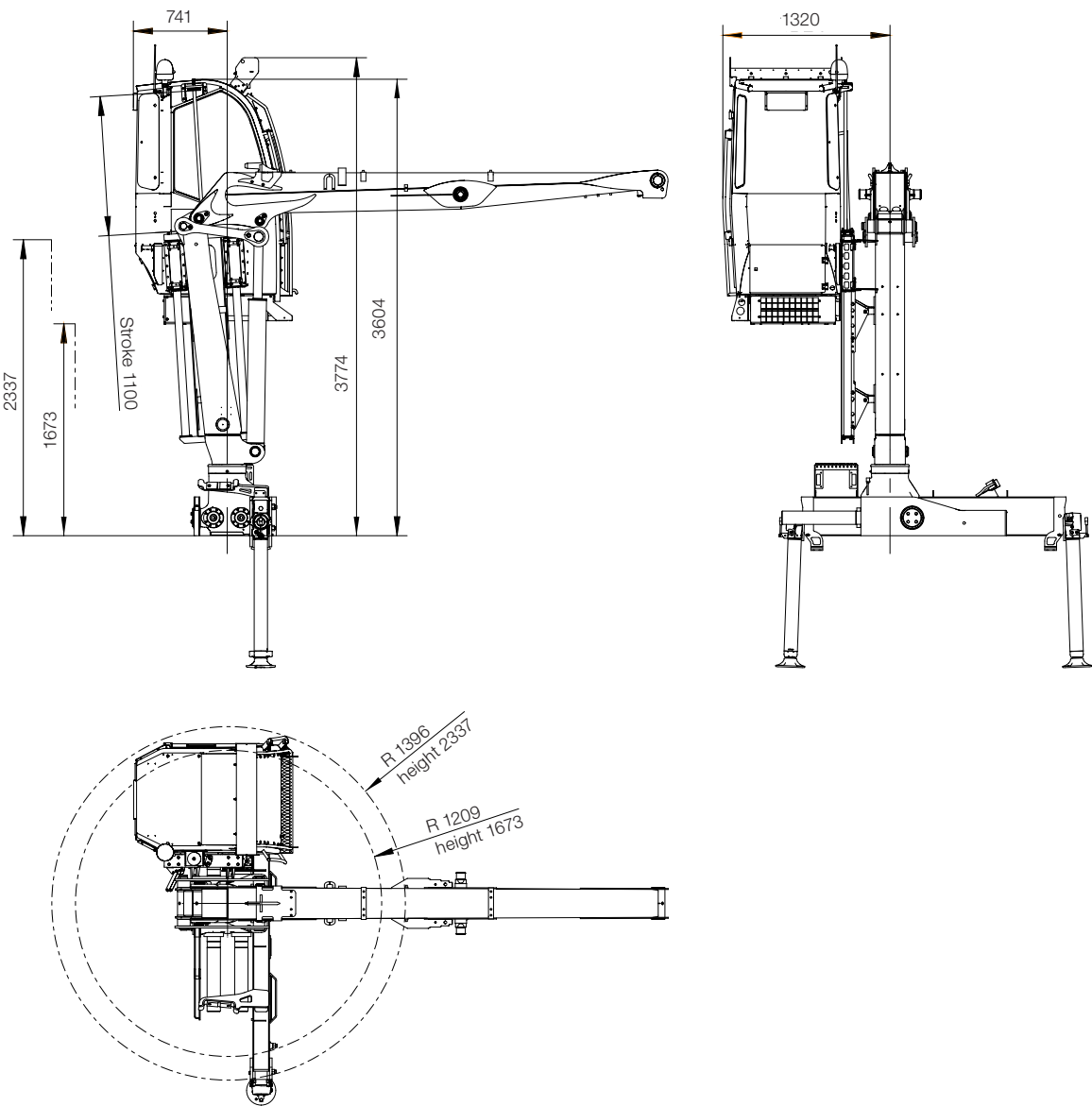
First boom



Second boom systems

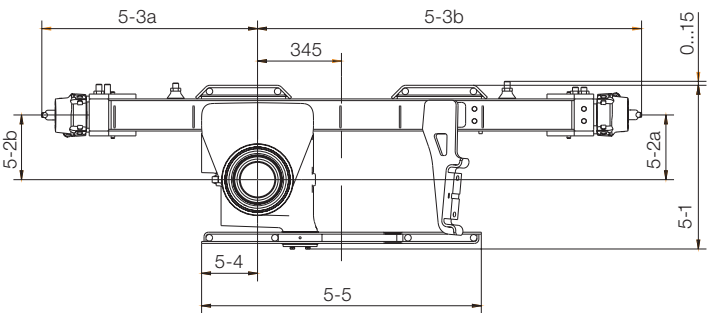


Dimensional drawing



Chassis installations

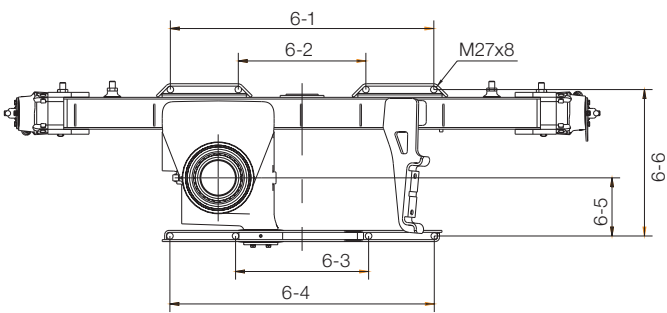
Base B4500



Base	5-1	5-2a	5-2b	5-3a	5-3b	5-4	5-5
Standard	680	266	266	890	1580	230	1150
B4500	680	266	266	890	1580	230	1150

All measurements in mm

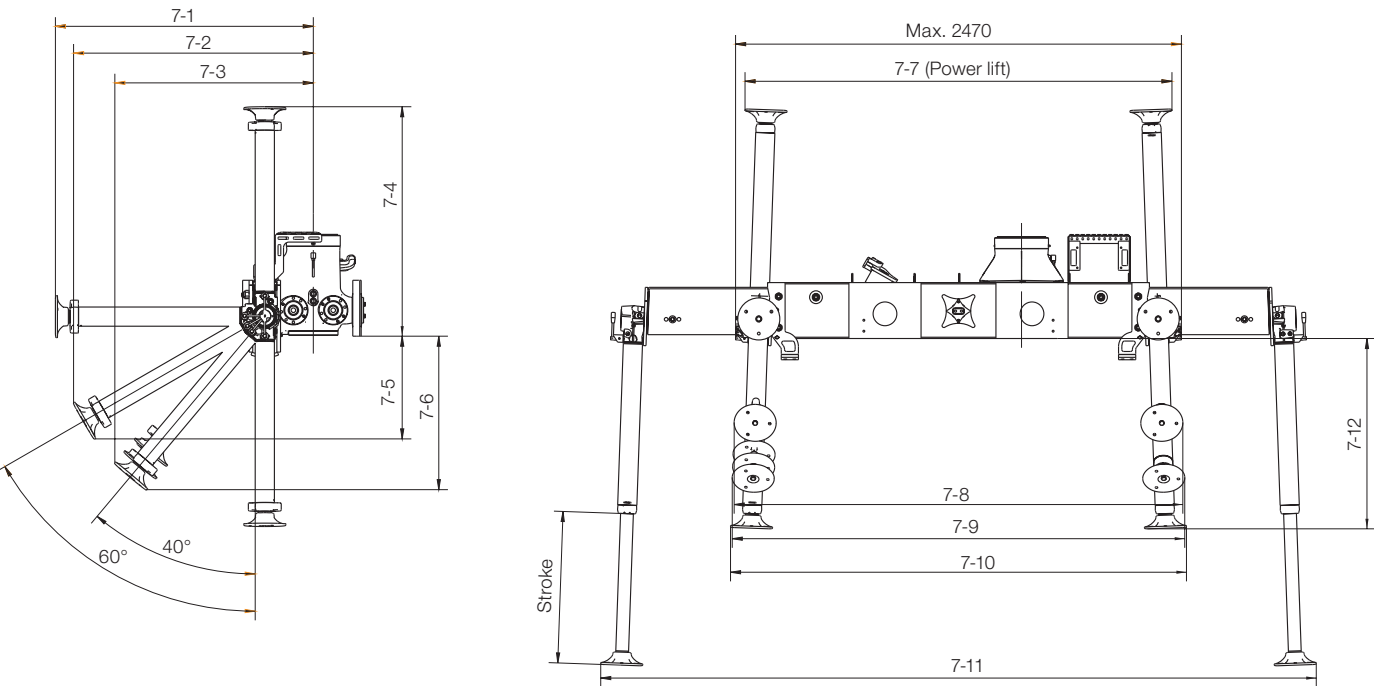
Base Standard



Fastening	6-1	6-2	6-3	6-4	6-5	6-6
Standard	1090	520	550	1080	240	600
B4500	1090	520	550	1080	240	600

All measurements in mm

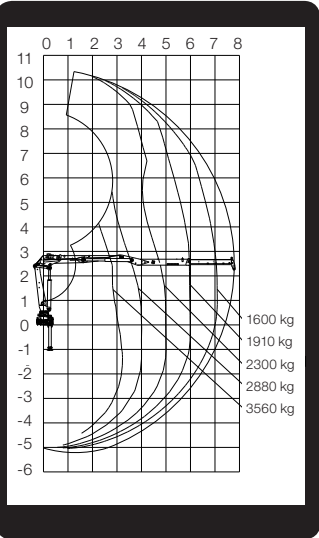
Stabilizers



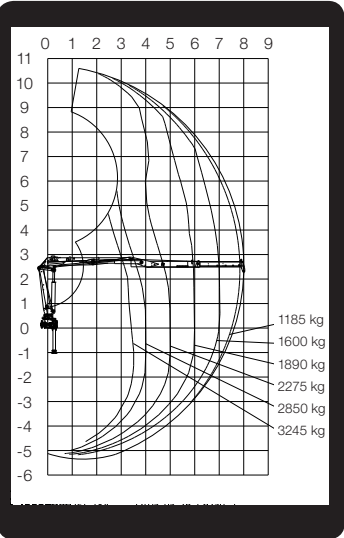
Base	Stroke	7-1	7-2	7-3	7-4	7-5	7-6	7-7	7-8	7-9	7-10	7-11	7-12
Standard	580	1245	1165	980	1090	480	715	2385	2455	2470	2485	3890	865
	670	1335	1245	1035	1180	525	785	2380	2455	2475	2490	3905	955
	750	1415	1315	1090	1260	565	845	2375	2460	2480	2495	3915	1040
B4500	580	1245	1165	980	1090	475	710	2420	2470	2475	2485	4480	865
	670	1335	1245	1035	1180	520	780	2415	2470	2480	2490	4485	955
	750	1415	1315	1090	1260	560	840	2410	2470	2480	2490	4495	1035

All measurements in mm

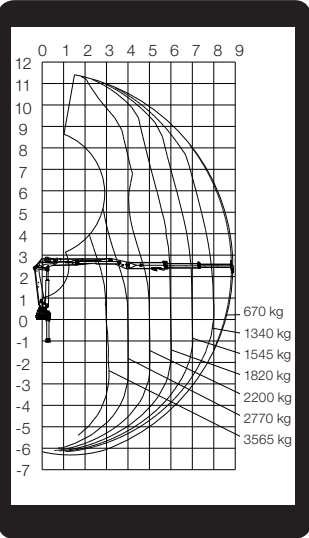
Load diagram
125Z78



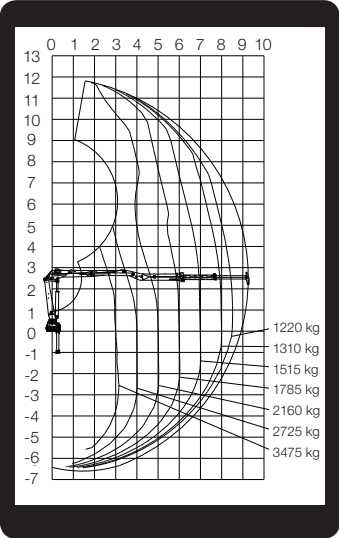
Load diagram
125Z80



Load diagram
125Z89



Load diagram
125Z93



BUILT TO PERFORM

Hiab is the world's leading provider of on-road load handling equipment. Customer satisfaction is the first priority for us. Hiab's product range includes HIAB loader cranes, JONSERED recycling and forestry cranes, LOGLIFT forestry cranes, MOFFETT truck mounted forklifts and MULTILIFT demountables, as well as DEL, WALTCO and ZEPRO tail lifts.

hiab.com

Hiab is part of Cargotec.

cargotec.com



PB-F125Z-EN-EU_170629

To learn more about LOGLIFT
visit loglift.com



hiab.com